

Welcome to the second semester at TUM Master Vocational Education and Innovation

Team Vocational Education and Innovation

April, 25 2023

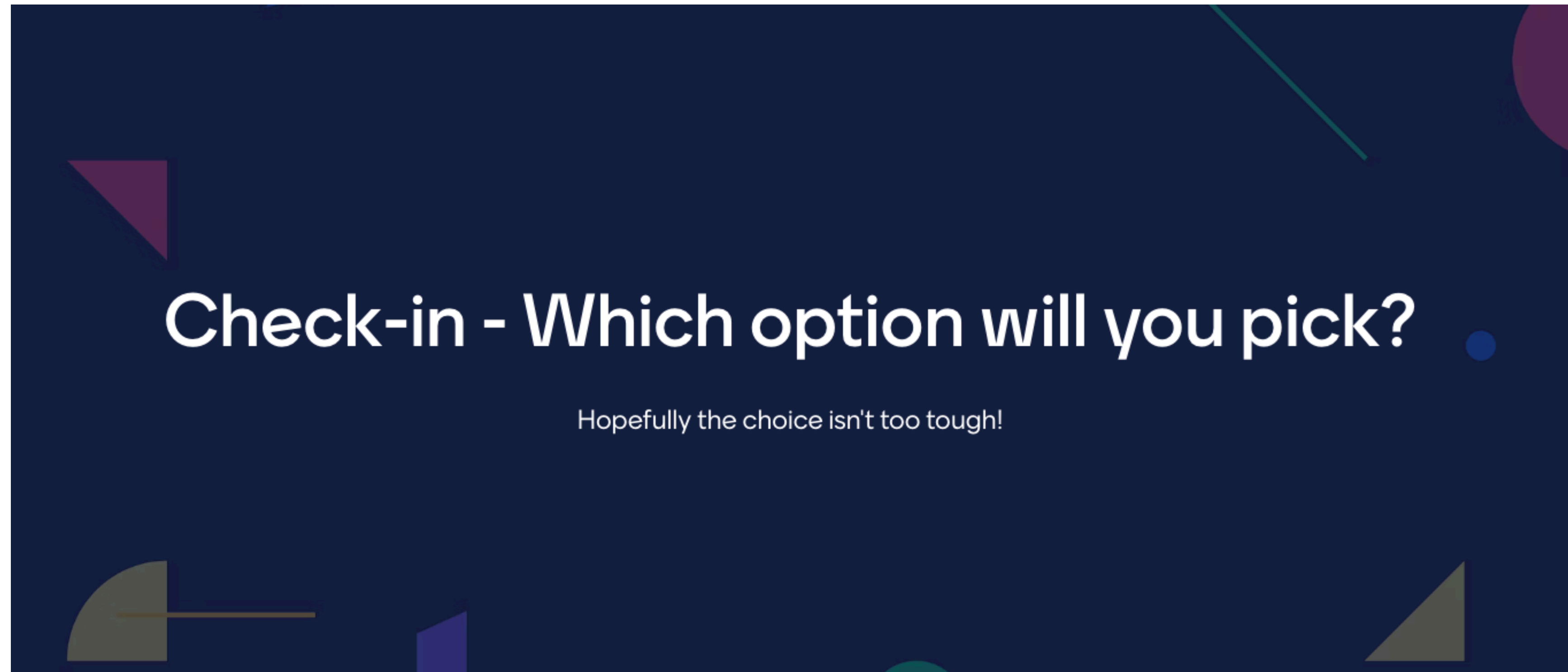
9.00 & 16.00



Agenda

- Welcome
- Organisational aspects
- Second semester information
 - Elevator pitches
 - Contact phase
- Transfer to workplace
- Your questions

Welcome back



Your questions for the second semester



<https://sellingenergy.com/faqs/>

Semester	Modules				Credit Points/ number of exams
1.	Models and Theories in VET (M02) 5 CP	Fundamentals of Empirical Research in VET (M03) 5 CP	Teaching and Learning in VET (M04) 5 CP	Mentoring (M01) 2 CP	17/4
2.	VET Structure and Organisation in Germany (M05) 5 CP	VET Concepts and Approaches from an International Perspective (M06) 5 CP	Workplace Learning (M07) 5 CP	2 CP	17/4
3.	Digital Transformation in VET (M08) 5 CP	People and Organisational Development (M09) 5 CP	Job Shadowing (M10) 4 CP	2 CP	16/4
4.	Specialization Modules* (elective) A / B / C / D (M11) 8 CP	Master's Thesis (M12) 10 CP		2 CP (total 8 CP)	20/3
5.	20 CP (total 30 CP)				20/1

* Specialization Modules are **A: Teaching and Learning in VET**, **B: Research in VET**, **C: Management and Leadership**, **D: Governance in VET**

Organisational aspects

- Immatriculation for second semester
- Registration for second semester modules on
(Please watch the recording for a step to step guide on how to register)
 - Moodle
 - TUM Campus
 - ! Additionally you will have to register for the exams at a later stage !

Second semester modules



<https://www.istockphoto.com/de/fotos/elevator-pitch>

VET Structure and Organisation in Germany

Lecturer: Lisa-Marie Rossmann (Professorship of Vocational Education)

Content

Participants gain insight into the structure, functions and mechanisms of the German VET system. The learning contents are organised in learning nuggets and are similar in structure to the contents of the module "*VET Concepts and Approaches from an International Perspective*".

Assessment

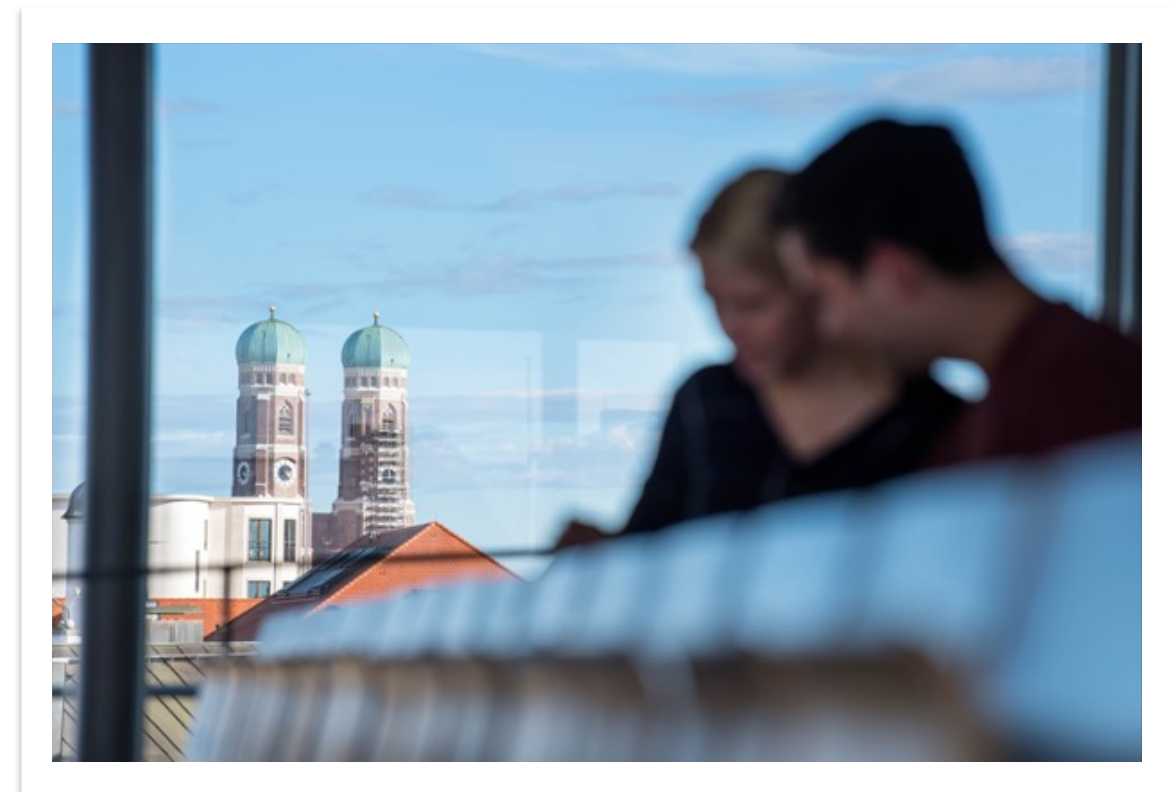
- Presentation of the project task in the contact phase
- Seminar paper (5-7 pages for each student)

Content

Fundamentals of policy and society, education system (primary, secondary, high-er, vocational), systemic functions, etc.

Submission

22 September, 2023



Workplace Learning

Lecturers: Theresa Bauer & Maxi Böger-Brausch (Professorship of Business Education)

Content

Participants gain insight into the theory and practice of learning in the workplace. The learning content, such as learning theories, is applied to your own workplace, and concrete scenarios are developed. You will submit a seminar paper and present your work in the next contact phase.

Assessment

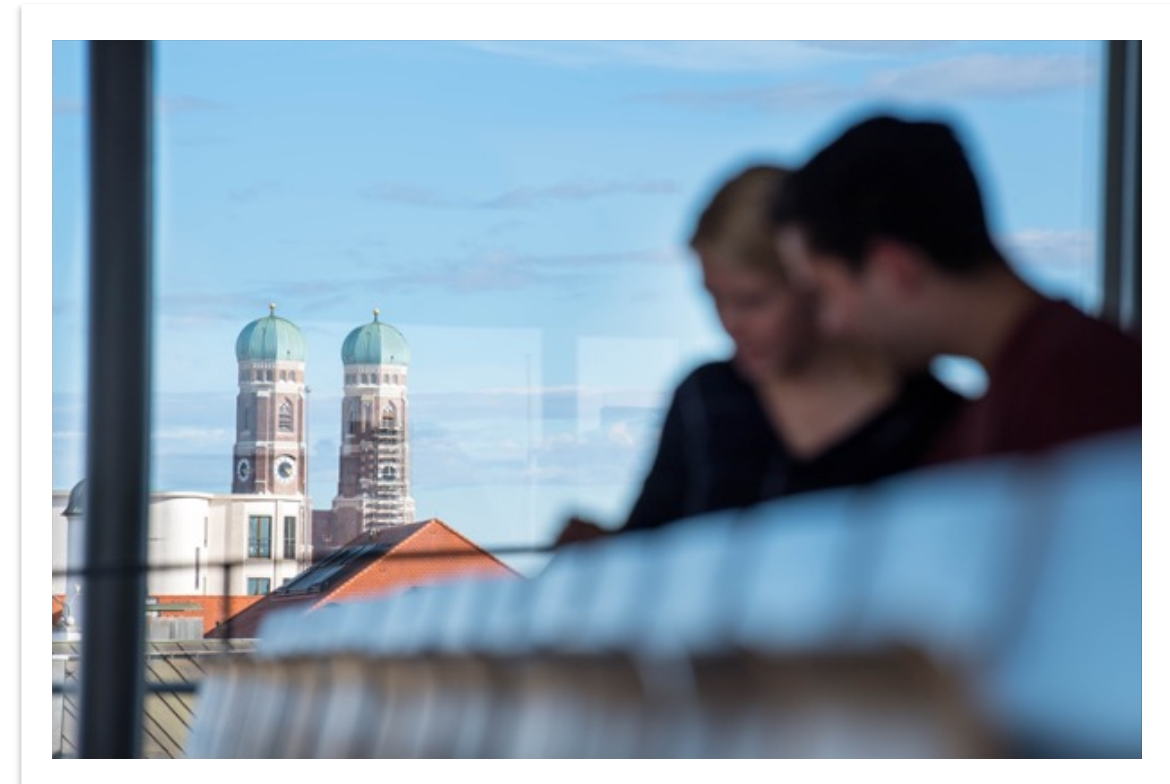
- Seminar paper (5-7 pages for each student)
- Presentation in the contact phase

Content

Learning Theories, Definition of Workplace Learning, Learning Transfer, Learning through Mistakes, etc.

Submission

25 August, 2023



VET Concepts and Approaches from an International Perspective

Lecturer: Lisa-Marie Rossmann (Professorship of Vocational Education)

Content

Participants gain insight into the structure, functions and mechanisms of their own national VET system. The learning content is acquired through an individual analysis in which students work through their education system using many given examples.

Assessment

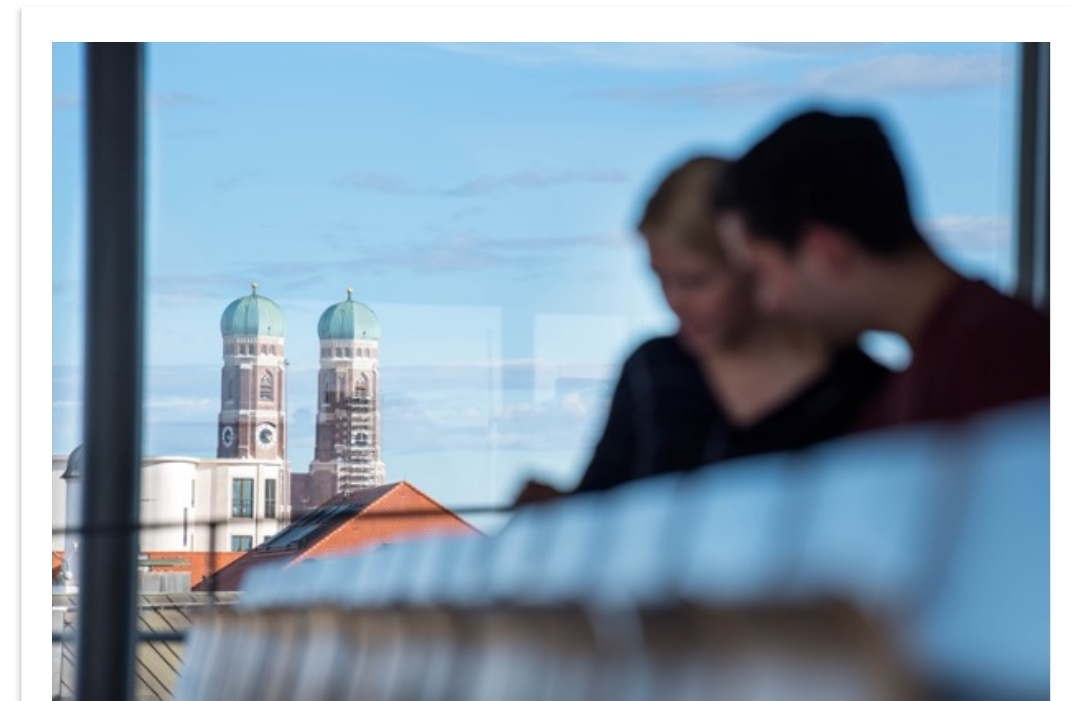
- Presentation of the project task in the contact phase
- Individual analysis (seminar paper 5-7 pages for each student)

Content

Methodology of comparison, fundamentals of policy and society, education system (primary, secondary, higher, vocational), etc.

Submission

29 September, 2023



Mentoring

Lecturers: Anna Maria Schneider & Katharina Prummer (Professorship of Technical Education)

Content

We will review the progress you have made in your mentoring partnership and introduce you to new Work 4.0 methods. Additionally, we will explore the topic of professional identity in our next contact phase, and the report you create will serve as a preparation for that.

Assessment

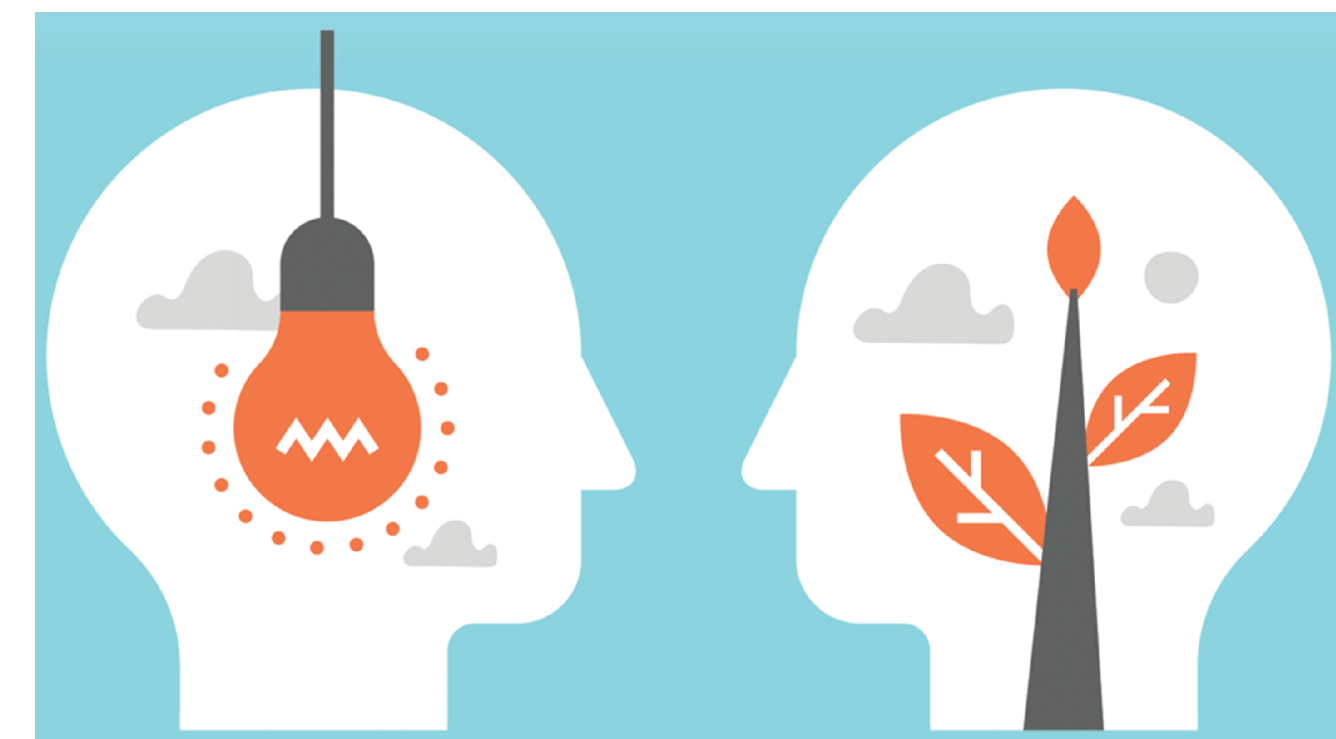
- Report (reflection based)
- Vision Board Pitch in the contact phase
- Mentoring Sessions

Content

- New Methods of Work 4.0
- Development of your professional identity
- Individual content from mentoring sessions

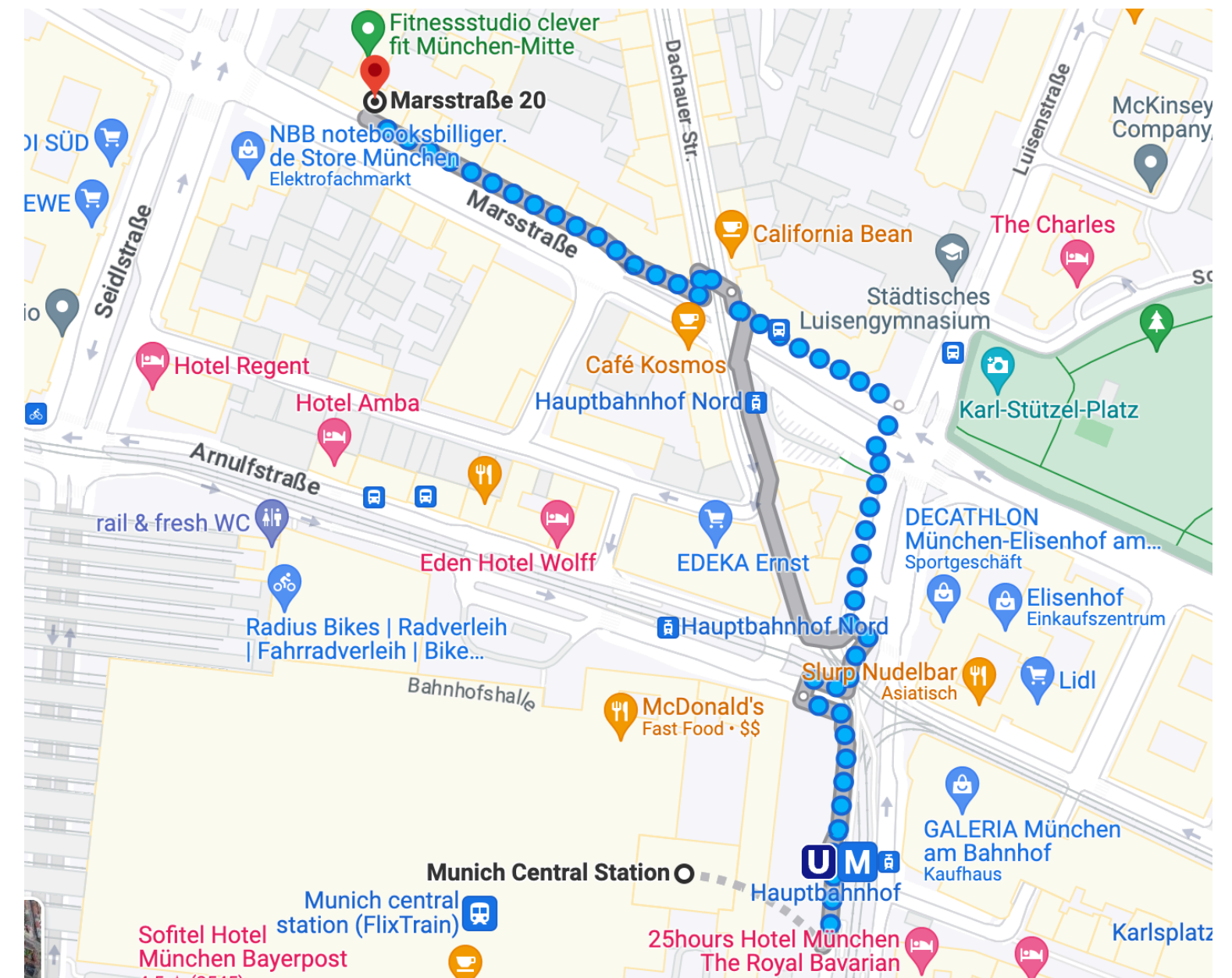
Submission

18 August, 2023



Contact phase

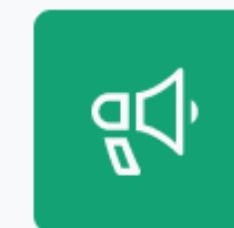
- From September 11 - 15, 2023 in Munich
- Book your flights and hotel rooms
- The contact phase will take place at Marsstr. 20 - 22 (5 mins from central station)
- We start on Monday at 9.00 and finish on Friday at 16.00



Transfer to workplace - questionnaire

We want to understand which factors influence your learning transfer to workplace

- Short questionnaire on Moodle
- Go to **Home** and the section **Contact phase** to find the questionnaire
- Take your time
- There are no right or wrong answers
- The questionnaire is not anonymous as it is administered on Moodle



FEEDBACK

Transfer Skills to Workplace

Your questions for the second semester



<https://sellingenergy.com/faqs/>

Mentimeter results

Morning session

Which questions for the second semester do you have on your mind?

7 Answers

Mentimeter

- will there be online lectures or will videos still be the main teaching approach?- will there be regular check-ins like today in order for us to connect in live time to the teaching team?

Not yet

When is the semester end, break and when will exams take place?

What will one do if one is not able to make it to the second contact phase

Not yet

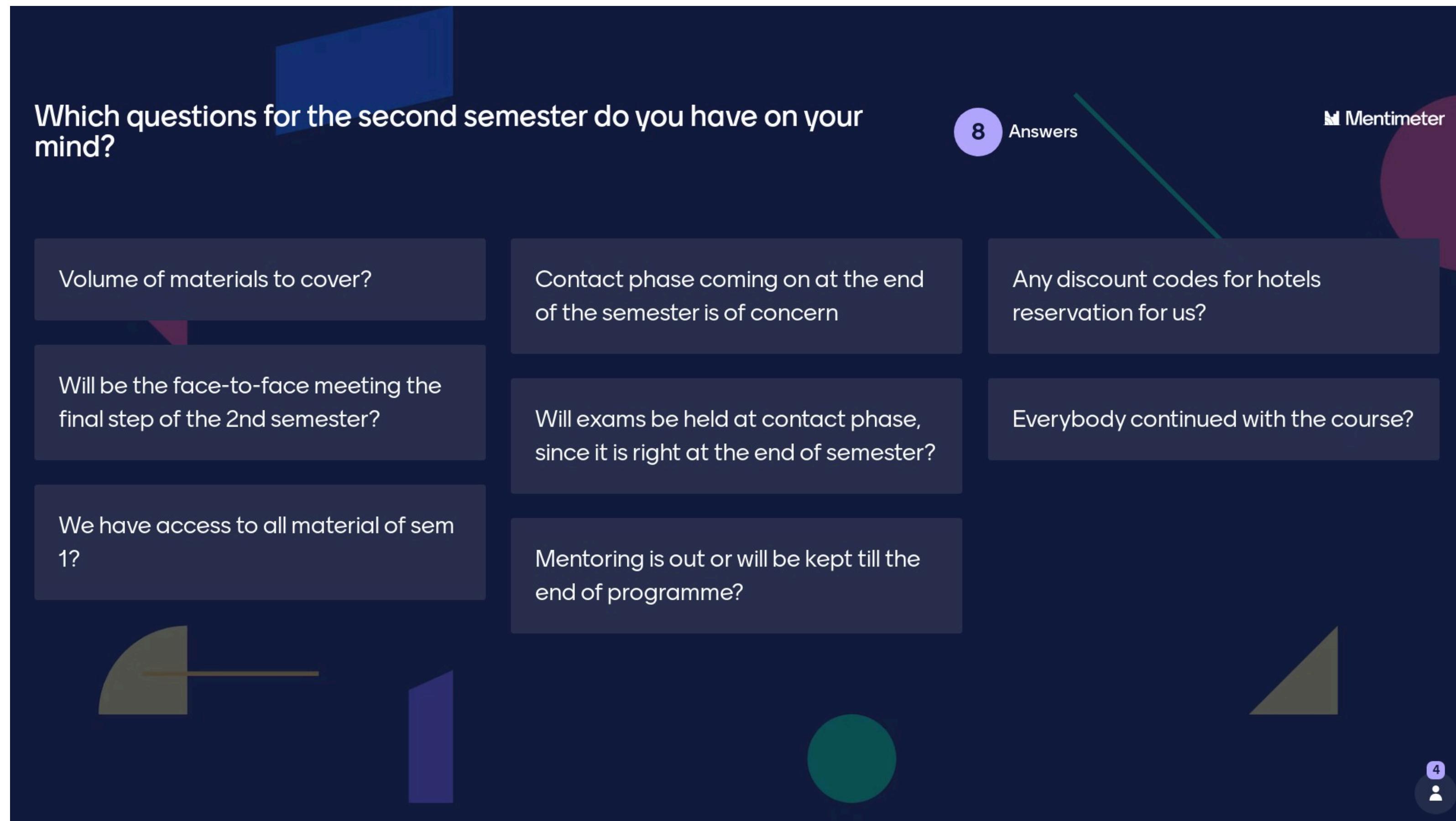
1. Will the format of exams be similar to Semester 12. Will peer group work continue?

Will all the modules be again in the Moodle? Or sth. else will be used also?

4

Mentimeter results

Afternoon session



Thank you for your attention !

